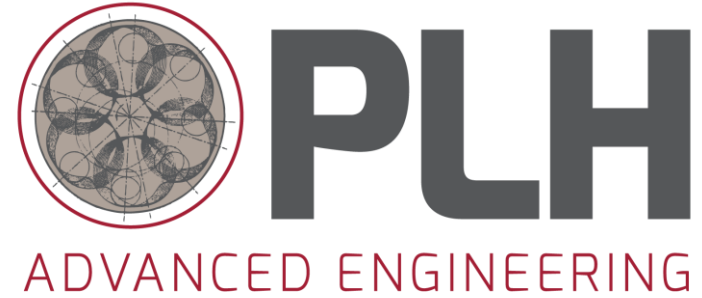


Prezentované:



Ing. Tomáš Špánik, PhD.

# Predstavenie spoločnosti

## Company Profile



**Primary Office – Salt Lake City, Utah**

**PLH Advanced Engineering** is an ISO 9001:2015 certified engineering services and technical management firms located in US & SVK. Main office in Salt Lake City, Utah and a sister office and Martin, Slovakia.

Our goal is to develop long-term relationships with our customers to provide efficient engineering services.

These highly valued relationships allow us to provide a significant competitive advantage to our customers.



**Sister Office – Martin, Slovakia**

PLH AE performs **design & analysis from concept to prototype, and implementation to production.**

**Our company's philosophy** is to deliver engineering solutions through innovative processes and the highest quality of work.

Our business depends on the success of our customers; therefore, **we are dedicated to making our customers successful.**

## Martin, Thurzova 16, Slovakia Office



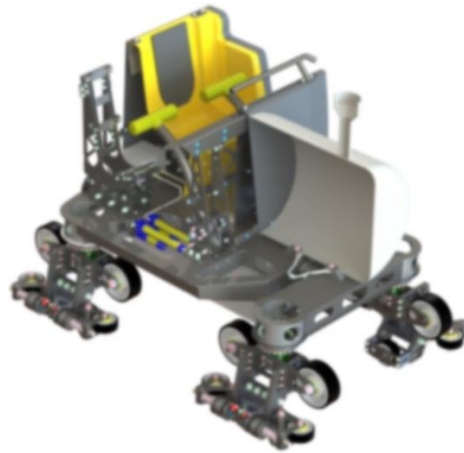
- **PLH Holdings owns this 15,000 m<sup>2</sup> historical site – formally the Institute for Technical Research and Development**
  - Site contains 1,000 m<sup>2</sup> shop space
- **PLH AE & DJH EC occupy 3,000 m<sup>2</sup> for Customer Projects**
  - Entry secure by key card access to each customer section
  - Secure Network
  - 24-hour on-site security personnel
- **Over 50 other businesses also occupy rented office space in the building**

## Layout of Vehicles & Devices



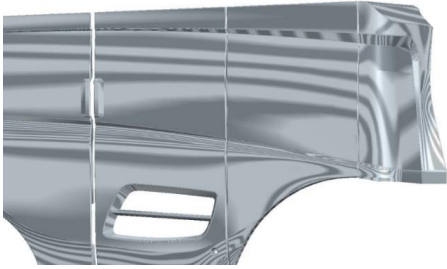
### Layout of Vehicles & Devices:

PLH AE Advanced Engineering has assisted in the development on a range of products in the Agricultural, Construction, Oil & Gas, and Consumer Product industries. From **full vehicle development, to component design, to styling, to cost improvement, to durability analysis**, our experiences, product knowledge and know-how makes PLH AE an indispensable source for your product development needs.



# General Design – Design Groups (Component type)

Styling Panels - Advanced Surfacing (Fiber Glass)



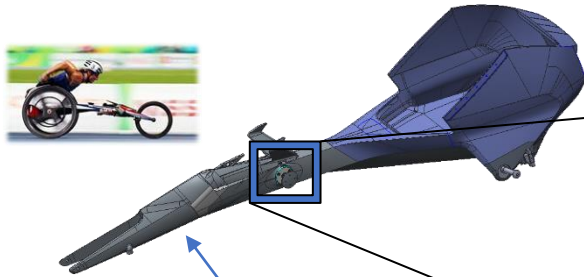
Combine CLS (Large Assembly)



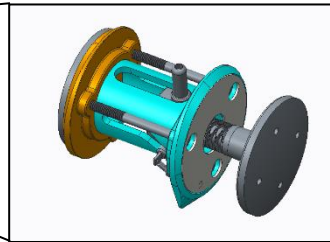
Chassis (Weldment Assemblies)



Steering mechanism (Casted & 3D Printed parts)



Frame

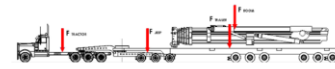


(Carbon Fiber Composite Structure)

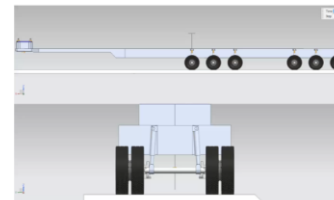
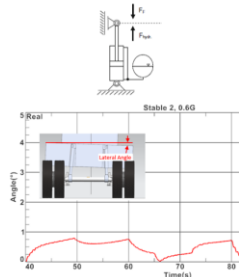
Tubular Roll-Over Protection Structures (Weldment Assemblies)



Control Mechanism (PCB design & Harness Routing)



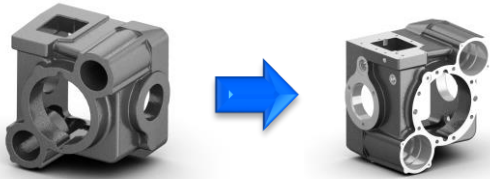
Trailer & Tilt (0.6G Lateral Load)



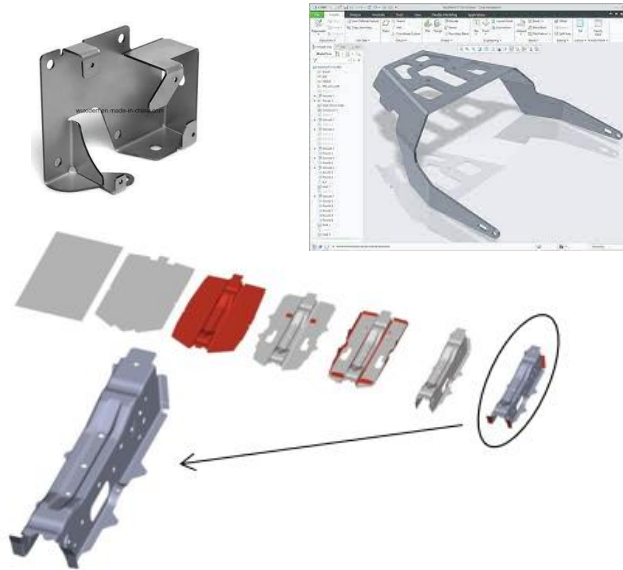
Trailer (Hydraulic System)

# General Design – Type of components

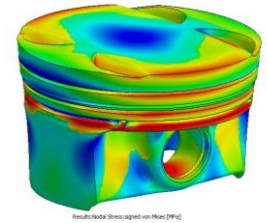
## Casted Components



## Sheetmetal & Advanced Sheetmetal Stamped Components



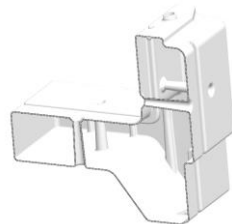
## Forged Components



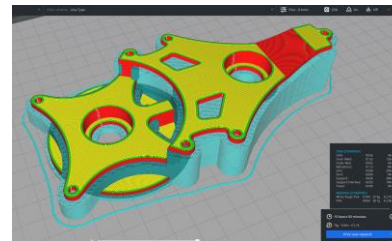
## Plastic Components



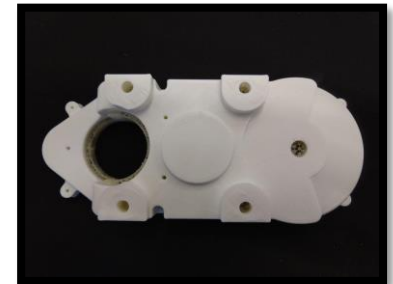
Kayak



Tanks



Gearbox Cases (3D Printed prototypes)



## R&D Projects done in PLH AE



# Our Customers

**DESIGN  
WORKS**

A BMW Group Company

**JONES SIGN**



**AGNICO EAGLE**





Prečo by ste sa k nám mali pridať?

Plat pre čerstvo vyštudovaného študenta: **1000 – 1150€** (brutto)



Podpisový bonus: **50% až 100%** platu po podpísaní ako bonus

Podiel na zisku - 13. plat



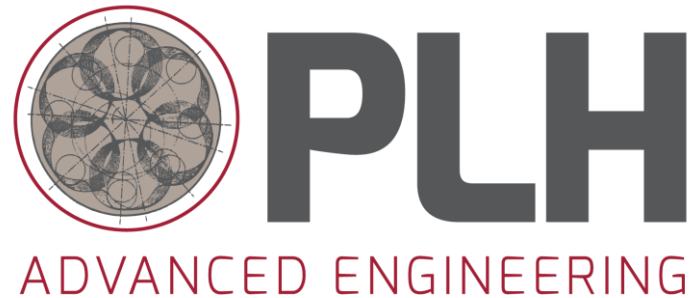
Príspevok na stravu - 100%

Príspevok 3. piliera DDS – až do výšky 4 %

**Kariérny a Intelektuálny rast**

**Podmienky: CAD + Anglický jazyk**





**Ďakujeme za Vašu pozornosť!**  
**Tešíme sa na stretnutie s Vami!**